

# LAWRENCE TECH LIBRARY

Portal to information resources –

*BB* <http://my.ltu.edu/>

<http://library.ltu.edu>

Phone: 248.204.3000

Email: [refdesk@ltu.edu](mailto:refdesk@ltu.edu)

Presented by Gretchen Weiner, Librarian

# *Location & Hours*

*Buell Management Building*

Lower level

Open Monday – (most) Saturday

See website for [current hours](#)


# *START YOUR RESEARCH*

- Library **home page**
- Learn your way around the basics
- **Catalogues** for books...
- **Subscription databases** for journal articles...
- Dissertations...
- Google Scholar...

# *HAVE A PLAN*

- Access Library resources from home or from the Library (authentication through BlackBoard)
- Visit the Library to locate material and ask questions
- Use tools like WorldCat or subject specific databases to identify relevant materials not available at LTU

# KEEPING TRACK

- Learn the *ins* and *outs* of  RefWorks
- Information and links to tutorials are on the library web page
- Develop a list of keywords and subject headings
- Develop a list of authors/experts in your field

# BOOKS

- [TechCat, the LTU Catalogue](#)
- [WorldCat](#) – identify relevant titles
- [MeLCat](#), Michigan libraries sharing
- [Interlibrary Loan](#)

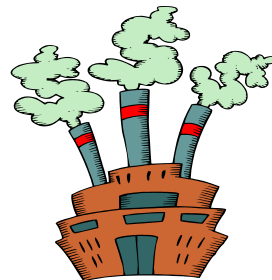


# Borrowing

- MeLCat, Michigan libraries sharing
- Reciprocal Lenders & Infopass
- Michicard
  
- Interlibrary loan (ILL) (mainly free)



- Purchase



# ARTICLES



## Journals, Conference Proceedings...

- Indexes/databases, or Google ?
- Full-text (or not)
- Citation only - how do I get it?
- Credibility issues





# STARTING POINTS

- Search Databases by Subject -
  - List of recommended starting points
    - *MANAGEMENT & IT*
    - *DISSERTATIONS*
    - *GENERAL*
    - *Other subject specific databases*

# DATABASES TO CONSIDER

- Business Source Complete
- Emerald
- IEEE Digital Library (DMIT)
- LexisNexis (includes Hoover's)
- Sage
- Scopus
- Subject specific databases

# Full Text

- Electronic or print
- **Not everything is on the web**
- **Not everything is free**
  
-  **LinkSource** – finds available full text from a citation
-  - *eJournal Finder* – list of available electronic journals

# DISSERTATIONS

- “Doctoral Students” LibGuide or
- “Doctoral Students” folder on the [library wiki](#)
  - information & tips on searching for & locating dissertations
- Limited number of faculty dissertations in the library collection available for borrowing
- LTU doctoral dissertations available electronically and in print

# ACQUIRING DISSERTATIONS

- *Search for Dissertations*
  - *WorldCat Dissertations*
  - *WorldCat / limit content by Thesis / dissertation*
  - Index only, no full text
  - Topic should be well defined at this point
  - Some may be available through interlibrary loan
  - Most available for purchase (Dissertation Express or direct)
  - Contact author
- *Reality Check*
  - Expect to spend money for information critical to your research
- *Dissertation Express*

# LOCATION LOCATION LOCATION

- On the shelf in the LTU Library
  - Not on campus? Place a request for the book from your library account in [TechCat](#) & pick it up at the circulation desk
- Not owned by LTU Library
  - MeLCat requests - online & pick it up at LTU
  - Investigate - Reciprocal, Michicard, Infopass
  - ILL requests - [online](#) or in [person](#)

# *Tips on Finding Standards*

- Access IEEE standards through [IEEE Digital Library](#) (does not include draft versions)
- Detroit Public Library has a broad collection of current standards (Phone: 313-833-1450)
- [ILI - Info](#) sells most standards, search their “store” for free to determine availability, revisions, etc.
- [ISO](#), [ANSI](#) also sell standards and allow free searching in their online “stores”.

# *Research Assistance*

-RefWorks will make your life easier

- *RefWorks* – bibliographic management tool that helps you collect and manage references; add notes, descriptors, urls to keep track of citations
  - More information through the library website
  - Available to students, faculty & staff



# Questions ?



- Contact us
  - phone (248.204.3000),
  - email (refdesk@ltu.edu),
  - chat (Library home page)
- Announcements, items of interest on [Blog](#), Twitter or Facebook
- Search tips, guides on LibGuides (new!) and [Wiki](#)